

Strain Gauge Based Transducer

The J2-S4 series of strain gauge based force transducers provides analog output proportional to the force applied to the button. The J2-S4 bottom mount transducer offers short travel, full bridge circuit, a flat button style, and 1 million cycle life.

The strain gauge transducer compensates for outside influences, like temperature, allowing the transducer to maintain accuracy even in the most demanding environments.

The J2-S4's threaded bushing case offers a secure switch retention method for a wide range of panel thicknesses.

Applications include flight control, operating ground vehicles, and cursor control or target acquisition.



J2-S4
Transducer

J2-S4 Key Features:

- Full bridge circuit type
- 1 million cycle life
- Short travel in each direction
- Watertight to IP68S
- Shorter behind panel
- Multiple button types available

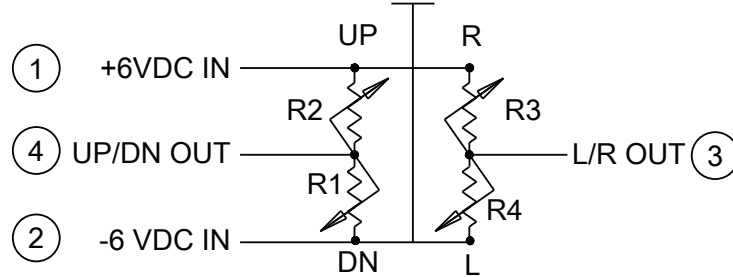
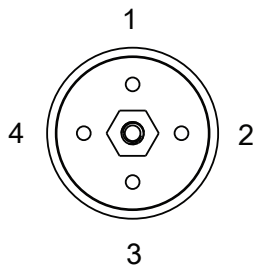
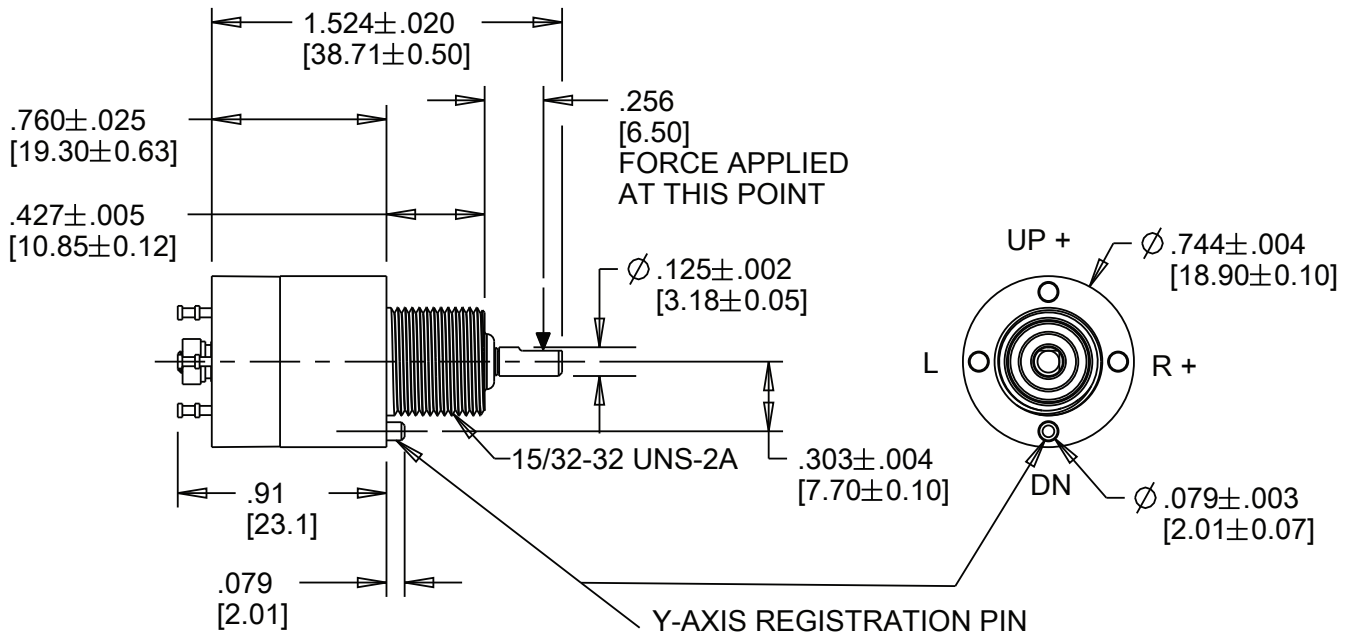
Standard Characteristics/Ratings:

ELECTRICAL RATINGS (+/- 6 VDC):

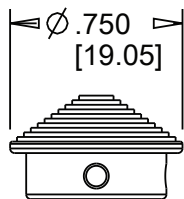
Sensitivity	.50 Volts per lb. typical
Insulation Resistance:	100MΩ min @ 50VDC
Null Temp Coefficient:	+/- .08% full scale per degree C max
Null Hysteresis:	+/- .006 VDC within 1 second after release
Sensitivity Temp Coefficient:	+/- .2% full scale per degree C
Null Output:	0VDC +/- .100VDC
Resolution:	Infinite
Element Resistance:	1000Ω +/- 15%
Seal:	IP68S Watertight
Operating Force:	3.0 lbs. typical
Operating Temp Range:	-54°C to +71°C
Storage Temp Range:	-57°C to +85°C
Travel:	.05" max travel each direction
Cycle Life:	1,000,000 cycles; 1 cycle = max travel & return

MATERIALS:

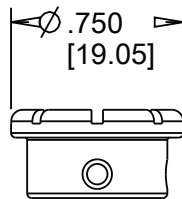
Button:	Anodized aluminum or plastic
Case:	Black anodized aluminum
Hardware:	Lockwasher, hex nut and button set screws



A. FULL BRIDGE



A. CONICAL
HAT



B. FLAT
BUTTON

